



Immaculate Conception Catholic Church & St. Theodore Mission



Jan. 22nd – 3rd Sunday in Ordinary Time



FOLLOW ME
- MATTHEW 4:19

MASS SCHEDULE Event Calendar

WEEKEND MASS TIMES

Immaculate Conception —Deer Lodge

Confessions/Reconciliation

Saturday 3:30 till 4:30 p.m.

Saturday Vigil Mass 5:00 p.m.

Sunday Mass 9:00 a.m.

St. Theodore—Avon

Sunday Mass 11:15 a.m.

WEEKDAY MASS TIMES

Tuesday through Friday

8:00 a.m.—Immaculate Conception

Rosary before daily Mass @ 7:40 a.m.

(Monday—No Mass)

Funeral Masses will generally be held at 11:00 a.m. and the 8:00 a.m. Mass that day will be cancelled.

The Sacrament of Penance/Reconciliation may also be scheduled by appointment.

Upcoming Events:

(Mark your Calendars)

Mon. Jan. 23rd, Fr. Joe's Day Off

Tue. Jan. 24th, 10:00 am, FDOH Board Mtg (Zoom)

Tue. Jan. 24th, 7:00 pm, RCIA Class in SLC

Wed. Jan. 25th, 2:20 pm, Mass at MSP

Thu. Jan. 26th, 7:00 pm, Women's Journey in SMC

Fri. Jan. 27th, 7:00 pm, Journey Confessions



We are continuing to receive shipments of crucifixes and will bless them and put them out for people to take home. We want everyone to enjoy the protection of our Lord.

The next RCIA class will be Tuesday, January 24th at 7:00 pm. We invite anyone that may have questions about the Catholic Faith to come join us and get their questions answered. We often learn best by listening to the questions and concerns of others.



Please pray for the Women's Journey Candidates:

Heidi Peterson	Maria Koslosky	Rochelle Miller
Lori StAubin	Sheena Johnson	Rachel Krach
Kelly Weinacht	Shailyn MacKenzie	LaFleur
Dot Warner	Marian Pacano	Jane Solan
Lenore Manning	Charmaine Everett	

Mass Intentions



The week of Jan. 21st through Jan. 28th

Sat. 5:00 pm Dede Cook/Ann. of death rb Mark Stelling

Sun. 9:00 am Pro Populo (For the People)

Mon. No Mass

Tue. 8:00 am Mary Parker rb Kathy Isaacson

Wed. 8:00 am Pearl Dubay rb Chris Dubay

Thu. 8:00 am Rose Heisdorf rb Family

Fri. 8:00 am Marie Gilbert rb Kathy Isaacson

Make a Holy Moment

The statements were set out Sunday January 12th and will be left out one more week for people to pick up. After that, we will mail them to the address we have on file. If you need any corrections give Fr. Joe a call at 846-4114.



Beverly & Greg Giannonatti

Memorial:

From Brad Goeres

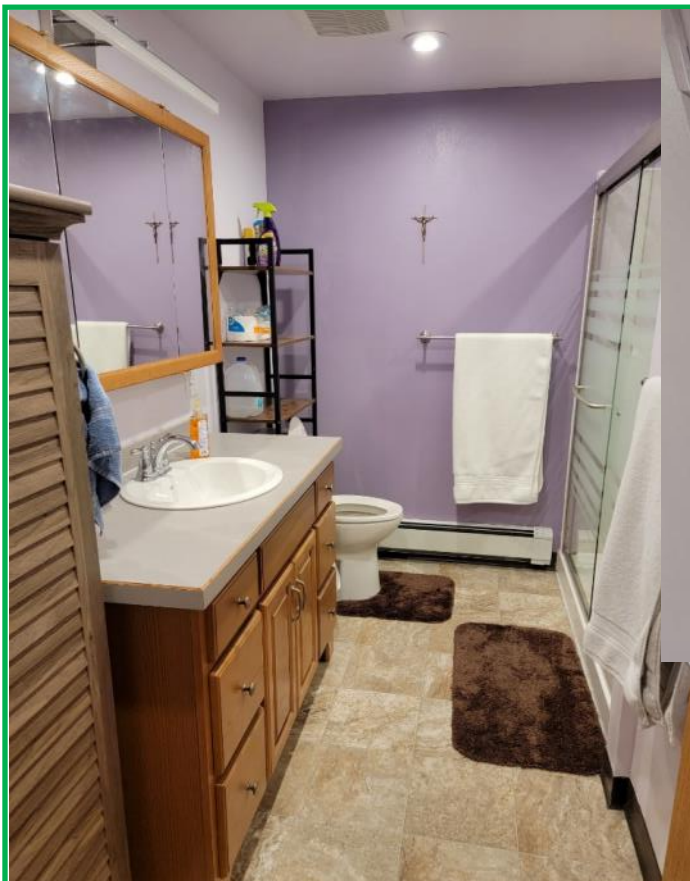
Every year on the anniversary of Beverly's death, her brother Brad sends us a very generous gift as a memorial.



2023 Camp Schedule & Details

<u>Camp</u>	<u>Dates</u>
Junior High #1	June 18-23
High School #1	June 25-30
Junior High #2	July 9-14
High School #2	July 16-21
5/6 Grade Boys	July 23-28
5/6 Grade Girls	July 30-August 4

Legendary Lodge is now open for Summer Camp reservations. As in the past, we have scholarships available for families that may need help. Talk to Joan Sewell if you have any questions.



We are ready for company. Fr. Haffey will be our first formal visitor when he comes and stays for the Journey on January 26th. We hope he will be the first of many welcomed guests to enjoy our parish's hospitality in our remodeled rectory basement.



**Support
Our
Parish
Sponsors**



SEWELL
CONSTRUCTION
900 Carter Street
Deer Lodge, MT 59722
(406) 560-1470

A generous parishioner has bought up the remaining ad space and offered it up for inspiring quotes each week. So be sure to check out the back page each week for the quote of the week.



ROTO-ROOTER®
406-494-3939

“To allow Christ to change our hearts will involve suffering, but it’s worth the freedom you will gain.”

(John Wood)



Dwight O'Hara
Investment Services, Inc.
Investment Advisor Representative
846-1457

email: dwightohara@ceteraadvisor.com

610 4th St.
P.O. Box 717
Deer Lodge
MT 59722

Securities and advisory services offered through Cetera Advisors, LLC, Member FINRA, SIPC. Cetera is under separate ownership from any other entity.

Free Range Eggs



Little Flower Farms
Mary Rose Lombardi
406-560-2997



ACE
The helpful place.
Rome Enterprises
846-2461
506 2nd St.
Deer Lodge, MT



PIONEER FEDERAL
SAVINGS AND LOAN
401 Milwaukee Ave.
846-2202
Banking Made Easier



Mountain View Retreat
1525 Valley View Drive
Deer Lodge, MT 59722
406-846-1521
Ed McCarthy, Owner
www.MtViewRetreat.com
ed@MtViewRetreat.com



**Joan's Unique
Hairdesigns**
846-1610
Joan Sewell
305 Missouri Avenue
Deer Lodge, MT



Newland & Company
A Professional Corporation
212 Missouri
Deer Lodge, MT
(406) 846-3733
**Individual & Business
Tax & Accounting Services**

Your Insurance & Investment Team



**FARM BUREAU
FINANCIAL SERVICES**
WILL JOHNSON & ASSOCIATES
Jim Decker
Sales Associate
406.846.4047
Tim Unger
Financial Advisor, Agent
406.728.6811



Puccinelli
Brandon Puccinelli
Master Plumber
846-560-8809
**24/7
Emergency
Plumbing
Calls**
Heating
New Construction & Remodels, Sewers, Boiler Systems, Gas Piping,
Radiant In-floor Systems, Water Heaters
BRANDONPUCC123@GMAIL.COM

SACRAMENTAL INFORMATION

Infant Baptism: Parents must be registered & active members of this parish or of another parish with family here in the parish (i.e., parents). Letter of permission from Pastor if parents are from outside the parish. Two Godparents who are registered and active members of their parish, one male and one female. Contact the Pastor before infant's due date to arrange date and time.

Holy Matrimony: Couples discerning this sacrament should contact the Pastor immediately after becoming engaged. NOTE: the diocese requires a minimum of 6 months advance notice regarding the intention to marry. Couples wishing to marry in the parish must be registered and active members of the parish, or individuals who have moved away whose parents are still active in the parish. Couples from other parishes must obtain a letter of permission to marry outside of their own parish.

Anointing of the Sick: Individuals who have been diagnosed as terminally or gravely ill or are preparing for invasive surgery should request this sacrament. Confession ordinarily proceeds receiving the sacrament of the sick, call the church office at 846-4114 to make arrangements.

Adult Confirmation, Adult Baptism (RCIA), and Adult Reception into Full Communion with the Church: If you, a family member, or a friend has not received the sacrament of confirmation, or are interested in being baptized into the Faith, or received into full communion with the Church, please contact the Pastor. Process will be discerned on an individual basis based on preparedness.

PARISH OFFICE INFORMATION

611 Clark St./P.O. Box 786
Deer Lodge, MT 59722
Phone: 406-846-4114

Email: icdeerlodge@outlook.com

Fr. Joe Fleming-Pastor

DIOCESE OF HELENA
Chancery Office

P.O. Box 1729/515 North Ewing Street,
Helena, MT 59624

Phone: 1-800-584-8914

www.diocesehelena.org

The Foundation for the Diocese of Helena
1-800-584-8914 www.fдох.org

WEEKLY OFFERTORY COLLECTION

3rd & 4th Sun. January 1/1/22 - YTD

\$ x,xxx Immaculate Conception \$ 3,149

\$ xxx St. Theodore \$ 941

Online Giving for Jan.: \$ 5,440 \$ 5,440